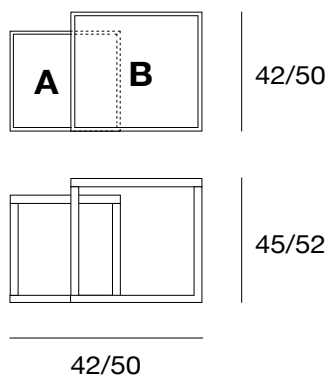


arch. Fabio Rebosio

ambo

Tavolini con struttura in massello di frassino. A richiesta, piani in vetro verniciato (extra chiaro bianco, nero, moka o fango). Coffee tables with structure in solid ash. On request, tops in lacquered glass (extra light white, black, moka or mud).

coffee table
cod.5364



laccato opaco poro aperto
open pore matt lacquered

legno
wood

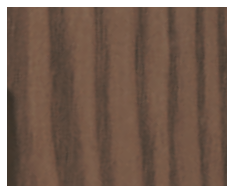
L21

bianco opaco
poro aperto
*open pore
matt white*



NC

frassino tinto noce
ash stained walnut



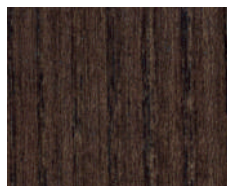
L29

madreperla opaco
poro aperto
*open pore
matt pearl*



TB

frassino o noce
canaletto tinto tabacco
*ash or canaletto
walnut stained tobacco*



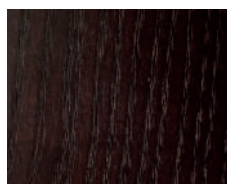
L23

cappuccino opaco
poro aperto
*open pore matt
cappuccino colour*



WG

frassino o noce
canaletto tinto wengè
*ash or canaletto
walnut stained wengè*



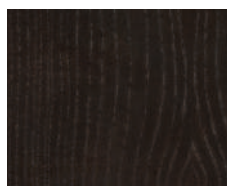
L28

grigio medio
poro aperto
*open pore matt
medium grey*



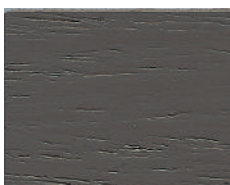
MK

frassino o noce
canaletto tinto moka
*ash or canaletto
walnut stained moka*



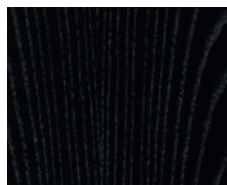
L25

grigio fumo opaco
poro aperto
*open pore matt
smoke grey*



TN

frassino o noce
canaletto tinto nero
*ash or canaletto
walnut stained black*



L22

nero opaco
poro aperto
*open pore
matt black*



L24

rosso opaco
poro aperto
*open pore
matt red*



I colori riprodotti sono da ritenersi puramente indicativi.
The colours shown here should be taken as purely indicative.