

## design Studio Tecnico Pacini & Cappellini

# Grace

Sedia con struttura in massello di frassino, seduta e schienale rivestiti in pelle, ecopelle o tessuto della collezione.

chair  
5446

*Chair with structure in solid ash, seat and backrest covered in leather, eco-leather or fabric of the collection.*



63

92  
65  
47



55

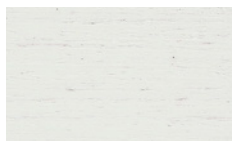
# finiture - finishings

I colori riprodotti sono da ritenersi puramente indicativi.  
The colours shown here should be taken as purely indicative.

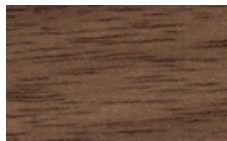
laccato opaco poro aperto  
*open pore matt lacquered*

legno  
*wood*

L21  
bianco opaco  
*matt white*



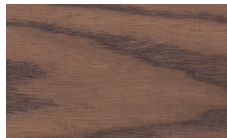
NK  
noce canaletto  
*canaletto walnut*



L29  
madreperla opaco  
*matt pearl*



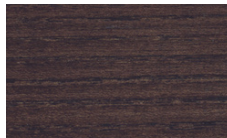
NC  
frassino tinto noce  
*ash stained walnut*



L23  
cappuccino opaco  
*matt cappuccino*



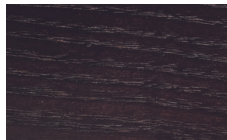
TB  
frassino o noce canaletto  
tinto tabacco  
*ash or canaletto walnut  
stained tobacco*



L28  
grigio medio opaco  
*matt medium grey*



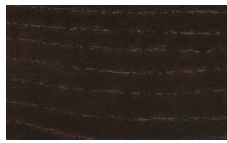
WG  
frassino o noce canaletto  
tinto wengè  
*ash or canaletto walnut  
stained wengè*



L25  
grigio fumo opaco  
*matt smoke grey*



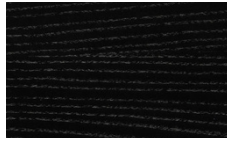
MK  
frassino o noce canaletto  
tinto moka  
*ash or canaletto walnut  
stained moka*



L22  
nero opaco  
*matt black*



TN  
frassino o noce canaletto  
tinto ner  
*ash or canaletto walnut  
stained black*



L24  
rosso opaco  
*matt red*



Su richiesta è possibile  
abbinare la tinta del  
frassino tinto noce al  
noce canaletto (NC + NK)

*On request it is possible  
to match the finishing  
ash stained walnut with  
canaletto walnut (NC +  
NK)*